

Eastern Region Update

WASHINGTON STATE GOOD ROADS &
TRANSPORTATION ASSOCIATION

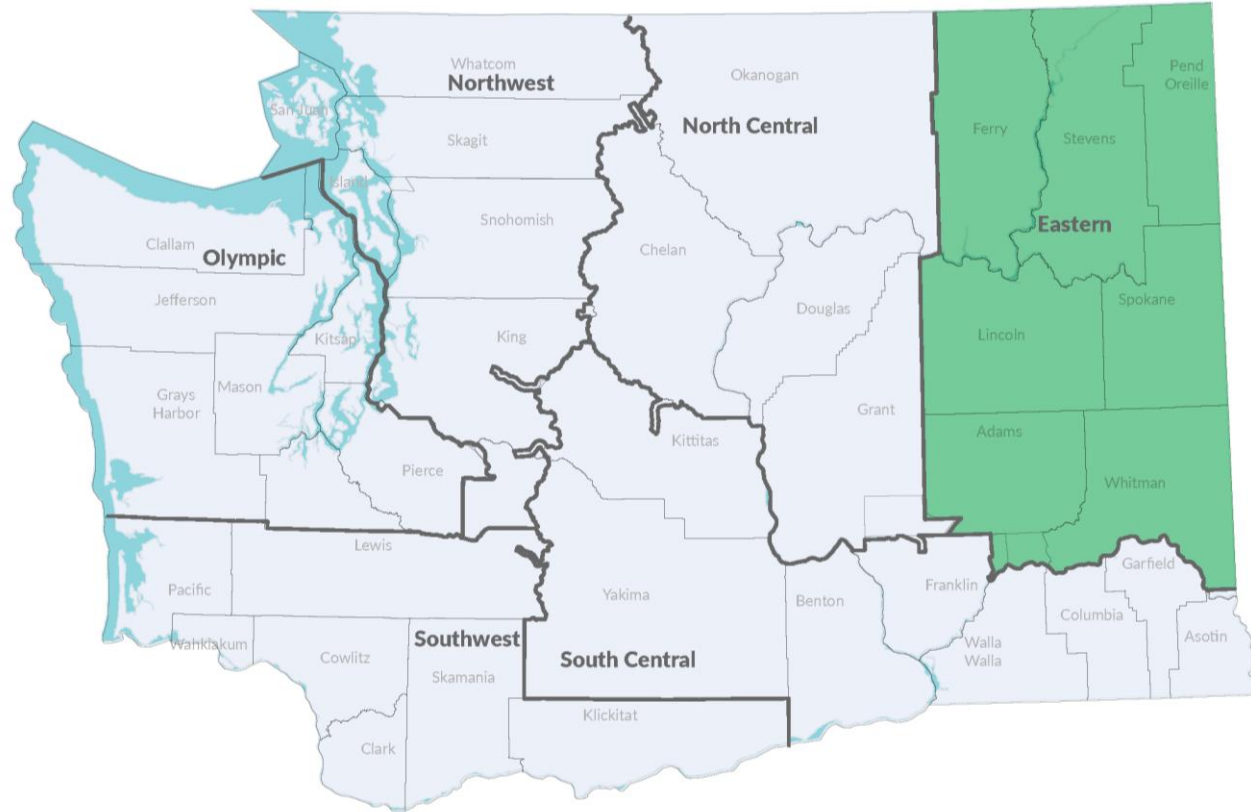
People, Places, Programs, and Projects

CHARLENE KAY, P.E.
Eastern Region - Regional Administrator
December 11, 2024



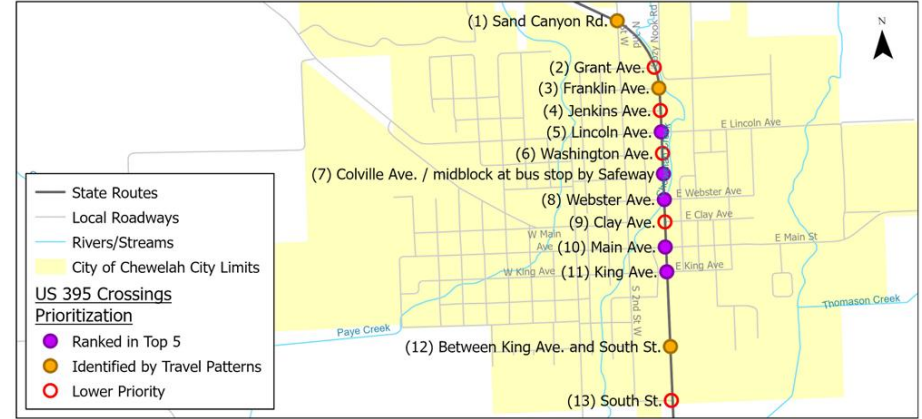
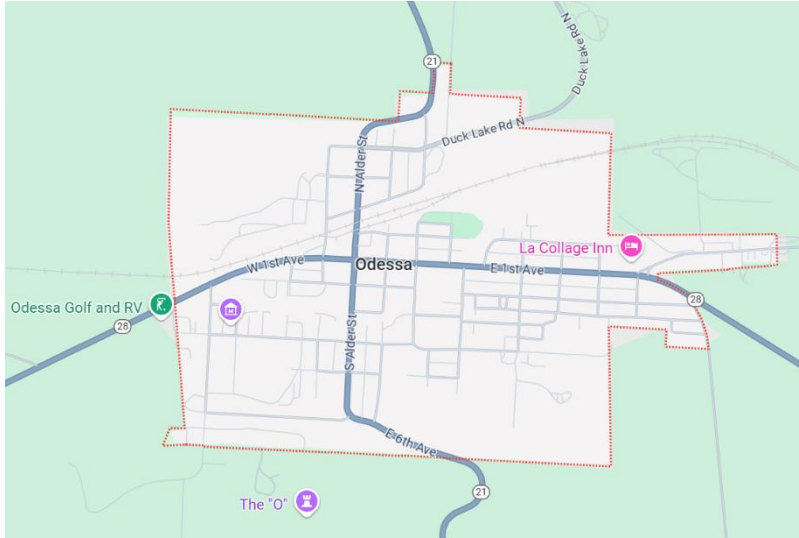
Eastern Region Overview

- Nearly 500 employees
- 7 counties
- 22 maintenance sheds
1 megaproject
- 3,913 lane miles
 - 313 concrete lane miles
 - 1,433 asphalt miles
 - 2,167 chip seal miles
- 467 structures
- Palouse Coulee City short line railroad – 297 miles
- Keller Ferry (SR 21)



Complete Streets & Preservation

- Advancing Complete Streets – 26 projects (preservation projects over \$500k)
- US 395 – City of Chewelah
- US 2/ Division Street – City of Spokane



Separating work in complete streets limits from corridor paving projects. Striving for exclusive Complete Streets projects.

Example Odessa – state routes 21 and 28 all intersect within city limits and would be separate project.

North Spokane Corridor Progress

Completed

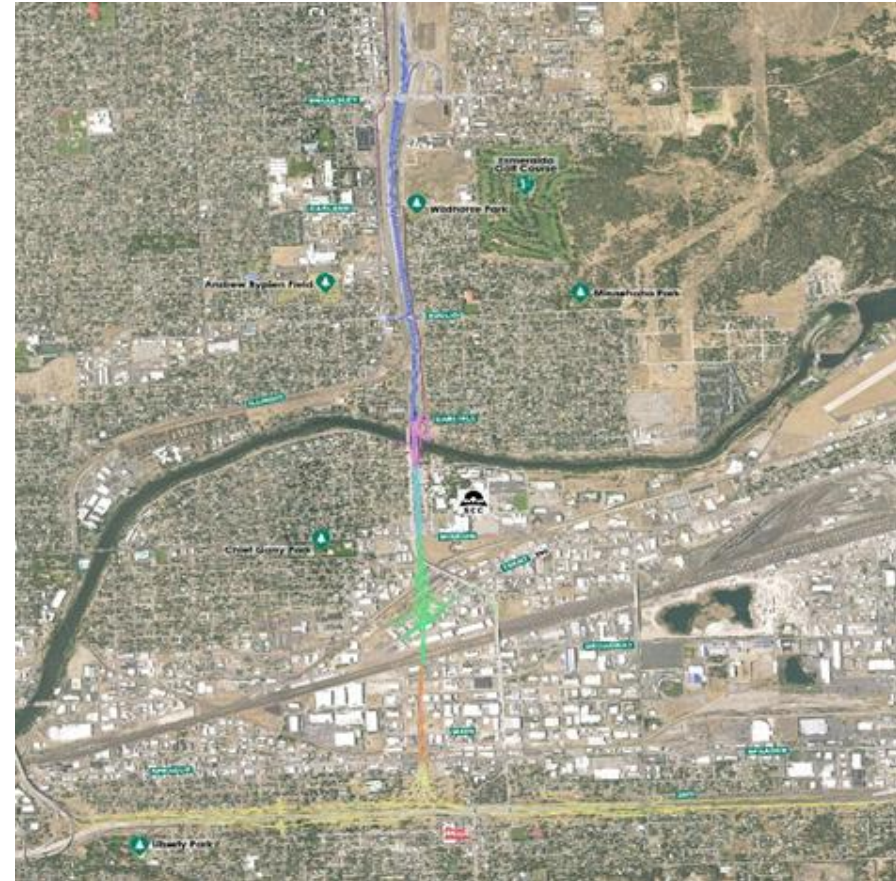
- 7 miles freeway open to traffic
- ~\$650 million in construction
- ~\$345 million in purchased right of way
- 5 interchanges
- 35+ bridges
- 1 railroad tunnel
- 4 railroad bridges
- Pedestrian/bike path (Shared use path)
- \$45 million in Federal Tiger Grants (2 Projects)
- BNSF Rail Realignment

Current Construction

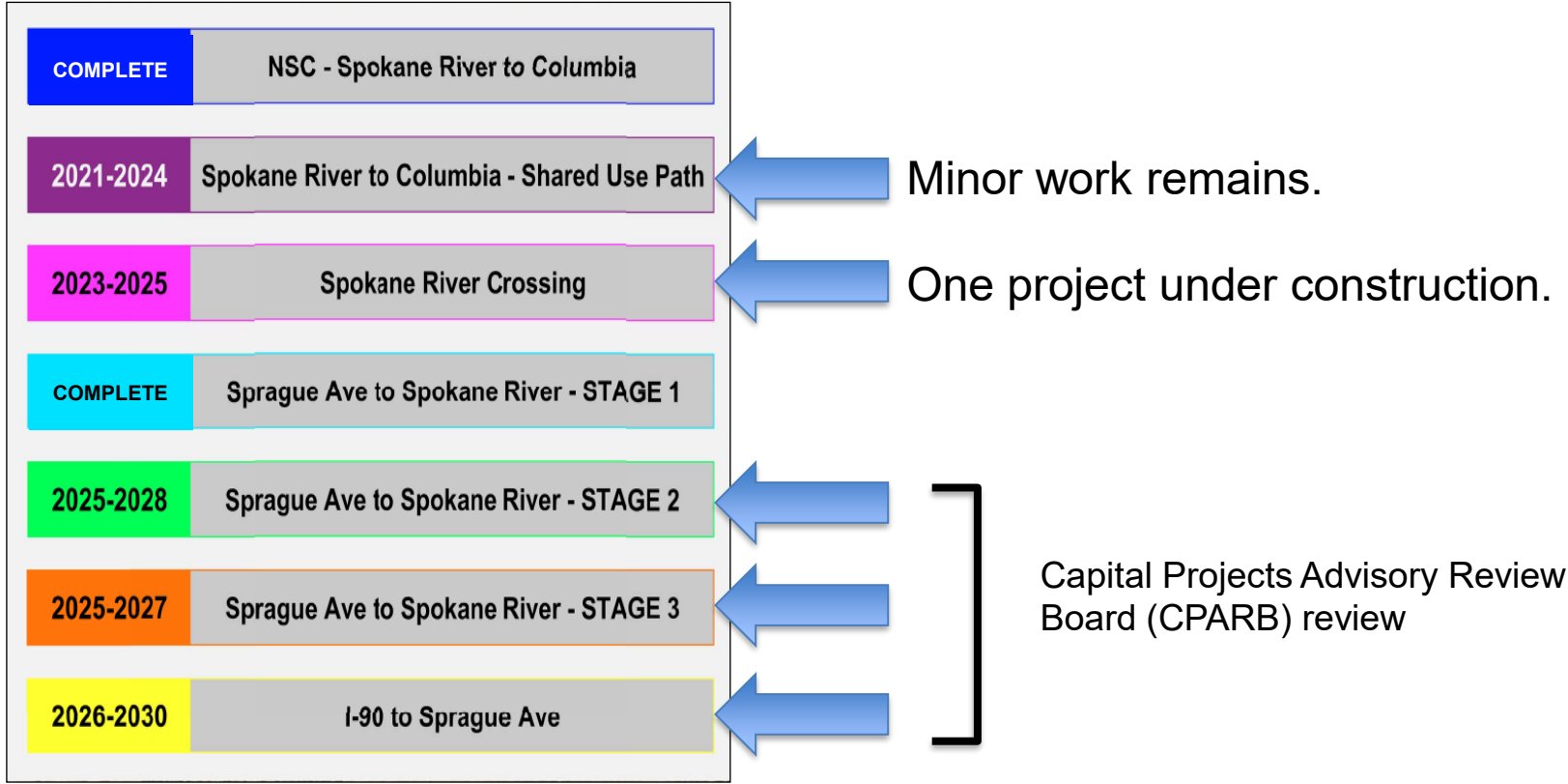
- Spokane River Crossing
- Minor work on Children of the Sun Trail

Remaining Work

- Connecting Washington efforts



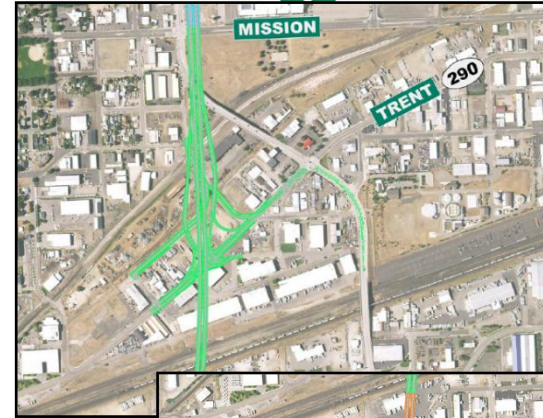
North Spokane Corridor Update



Connecting Washington Segments

- Spokane River to Columbia – **Completed August 2024**
 - NSC to Wellesley Ave. opened in Nov. 2023
- Children Of the Sun Trail – **Completed November 2024**
 - Euclid Ave. (Spokane River) vicinity
- Spokane River Crossing – 2023-2025 – **Under Construction**
 - (Includes the Children of the Sun River Crossing segment)
- Sprague Ave to Spokane River – **Stage 1 Completed Nov. 2023**
- Sprague Ave to Spokane River – **Stage 3 Ad January 2025**
- Sprague Ave to Spokane River – **Stage 2 Ad April 2025**
- I-90 to Sprague Ave **2026 - 2030**

Current funding



Stage 2
including
Trent
Avenue
interchange



Stage 3 and
Interstate 90
connection project

Progress Spokane River Crossing



Children of the Sun Trail

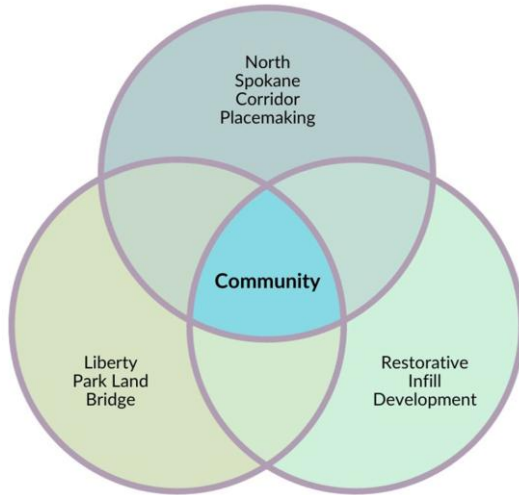


- Shared use path - 10.5 miles parallel to the North Spokane Corridor.
- Eventually will connect into Centennial Trail and Ben Burr Trail in Spokane.
- Placemaking - public spaces developed along the trail to enhance interface with adjacent neighborhoods.
- Newest section celebrated in June 2024 with ribbon cutting.

Community Engagement Approach

Community Centered – “People, Places, and Possibilities”

- Enhancing relationships – one community at a time.
- We ask community how they would like to be engaged and offer a variety of approaches to reach diverse project stakeholders.
- Equity and Environmental Justice are the foundation of engagement guiding principles.



WSDOT Connects – Complete Streets Workshop

Iterative Process – Continuous Improvement

- Evaluation and feedback opportunities at each event.
- Feedback is used for continuous improvement.



Questions?

CHARLENE KAY, P.E.
Eastern Region Administrator
Charlene.kay@wsdot.wa.gov